

USE CASE

A global trading company enhances its Asia-Pacific network infrastructure with CypressTel's network solutions to improve management efficiency, network reliability, and seamless global integration.

OBJECTIVES

To deploy an SD-WAN solution that integrates with the client's global network, we aim to improve network stability and reduce packet loss in the Asia-Pacific region, especially China. The company has already implemented a specific SD-WAN brand in the Americas and Europe and now seeks to connect the Asia-Pacific network to enhance management convenience and reliability.

SOLUTIONS

CypressTel has deployed a robust SD-WAN solution and MPLS integration to address the client's networking challenges in the Asia-Pacific region. This ensures reliable connectivity and performance across the Japan DC and multiple sites in China.

KEY BENEFITS

Seamless Integration

Compatibility with the client's existing SD-WAN infrastructure enables unified global management.

Enhanced Reliability

End-to-end MPLS backbone transmission ensures stable and reliable network performance.

Simplified Operations

SD-WAN's network and device performance visibility streamlines IT operations, and it is supported by 7×24 local technical support and after-sales service.

High Availability

Achieve 99.99% network uptime through a redundant backbone architecture and dual cross-border transmission hubs, ensuring business continuity.



COMPANY OVERVIEW

A leading global trading company that operates in multiple countries. It serves users worldwide through businesses in 30 countries and regions, comprising over 70 businesses and approximately 2 billion users globally. Each area has a regional data center to manage production data effectively.

AT A GLANCE

Industry

Trading

Challenges

- Packet loss occurs during peak usage times
- No on-site IT staff in China
- Need for better integration with existing global SD-WAN
- Requirement for improved reliability and efficiency

Solution

SD-WAN with MPLS backbone integration

Benefits

- MPLS backbone for stable connectivity
- Unified existing SD-WAN integration
- Enhanced visibility and local support
- Redundant design for 99.99% uptime
- Streamlined management for IT operations

HOW IT WORKS?

CypressTel implements a single-site dual PE high availability (HA) mode in key locations, seamlessly integrating with our MPLS backbone network. Other sites utilize multi-WAN access for connectivity. This design ensures optimal link utilization and maintains a network availability rate of 99.99% across multiple sites in Japan and China.

Local Fiber and Backbone Network

We combine local fiber connections with our redundant backbone network to deliver high-speed access and minimal latency. This setup supports rapid data transmission, enabling businesses to efficiently manage large volumes of data and adapt quickly to changing connectivity demands.

Centralized Management

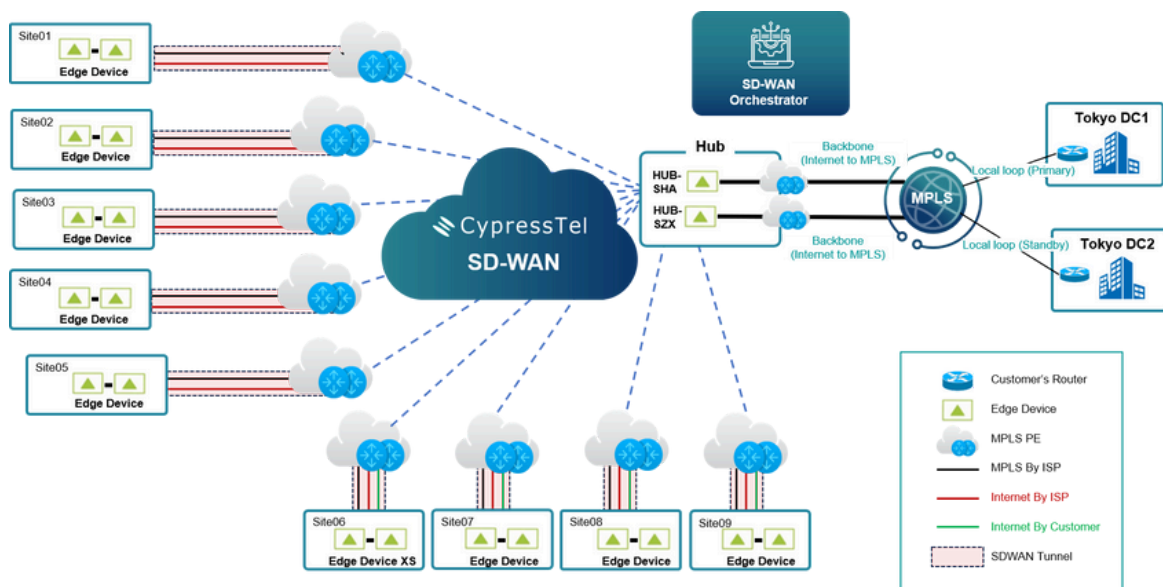
Our unified management system simplifies network operations by providing a centralized platform for monitoring and managing resources. This improves visibility, streamlines troubleshooting, and reduces maintenance time, allowing IT teams to focus on strategic initiatives that drive business growth.

Dual Cross-Border Hubs

Our dual cross-border transmission hubs enhance redundancy and performance by connecting multiple local POPs. This configuration ensures continuous service availability through reliable cross-border traffic routing and optimizes load balancing during peak usage and disruptions.

Expert Support & Real-Time Monitoring

Our comprehensive project coordination—featuring weekly progress meetings, configuration planning, and UAT—ensures a smooth rollout. Our real-time performance monitoring, backed by 24/7 local expertise, quickly identifies and resolves issues, enhancing operational efficiency and sustaining consistent performance standards.



WHY CYPRESSTEL?

CypressTel is a leading global network service provider and pioneer in SD-WAN, delivering advanced and innovative ICT solutions for businesses of all sizes. With over 17 years of experience, we offer a wide range of services, including SD-WAN, SASE, Internet Access, Private Networks, Data Center Colocation, Cloud Connect, and WAN Optimization. Our extensive global presence features over 30 data centers, over 140 network PoPs, and coverage in over 300 cities, with a network capacity exceeding 10T. We are committed to continuous technological research and innovation in AI and edge computing, driving the adoption of new technologies.



✉ contact@cypresstel.com

🌐 <https://www.cypresstel.com>

Contact us



Follow us



CypressTel 🔍