

USE CASE

A leading electronics manufacturer upgrades its network infrastructure with MPLS solutions to achieve superior reliability, scalability, and security for its growing operational needs.

OBJECTIVES

To implement a robust MPLS network solution that effectively addresses the challenges businesses face in managing their network infrastructure. This includes improving connectivity reliability, enhancing security, and enabling rapid scalability to support growing operational needs.

SOLUTIONS

CypressTel has implemented a reliable and efficient MPLS solution to address businesses' networking challenges effectively. This solution ensures seamless connectivity and optimal performance across 15 sites in Asia and China.

KEY BENEFITS

Cost Savings

Utilize local bare fiber and our backbone network for scalability at minute-level increments, reducing monthly costs and enabling swift bandwidth adjustments without incurring significant additional expenses.

High Availability

Our MPLS solutions provide 99.99% network availability, reducing downtime and supporting critical operations to enhance productivity and ensure consistent service delivery.

Unified Management

Centralized monitoring streamlines network operations, improves visibility, and facilitates faster decision-making while minimizing the time spent on routine management tasks.

Enhanced Security

Strong security measures safeguard sensitive data through advanced encryption and access controls, ensuring compliance and fostering customer trust against cyber threats.



COMPANY OVERVIEW

The company is the world's leading provider of electronic manufacturing services (EMS). It operates across four major product sectors: consumer electronics, cloud networking products, computer terminal products, and components. In 2024, Foxconn was ranked among the Fortune Global 500 and recognized as one of Forbes' Top 100 Digital Companies.

AT A GLANCE

Industry

Manufacturing

Challenges

- Outdated P2P network infrastructure
- Slow response to capacity demands
- Frequent service disruptions
- Issues with managing multiple direct connections

Solution

MPLS Private Network

Benefits

- Rapid Scalability
- Cost Savings
- Centralized Control
- Enhanced Security

HOW IT WORKS?

CypressTel proposes a dual-link load-balancing approach for core sites that connects seamlessly to backbone network, while other sites utilize dedicated network for integration. This design optimizes network utilization and ensures core sites maintain a 99.99% network availability rate.

Local Bare Fiber + Backbone Network

Integrate local bare fiber connections with backbone network to achieve high-speed access and minimal latency. This setup facilitates rapid data transmission, enabling businesses to efficiently manage large data transfers and easily adapt their operations to changing connectivity needs.

Centralized Management Platform

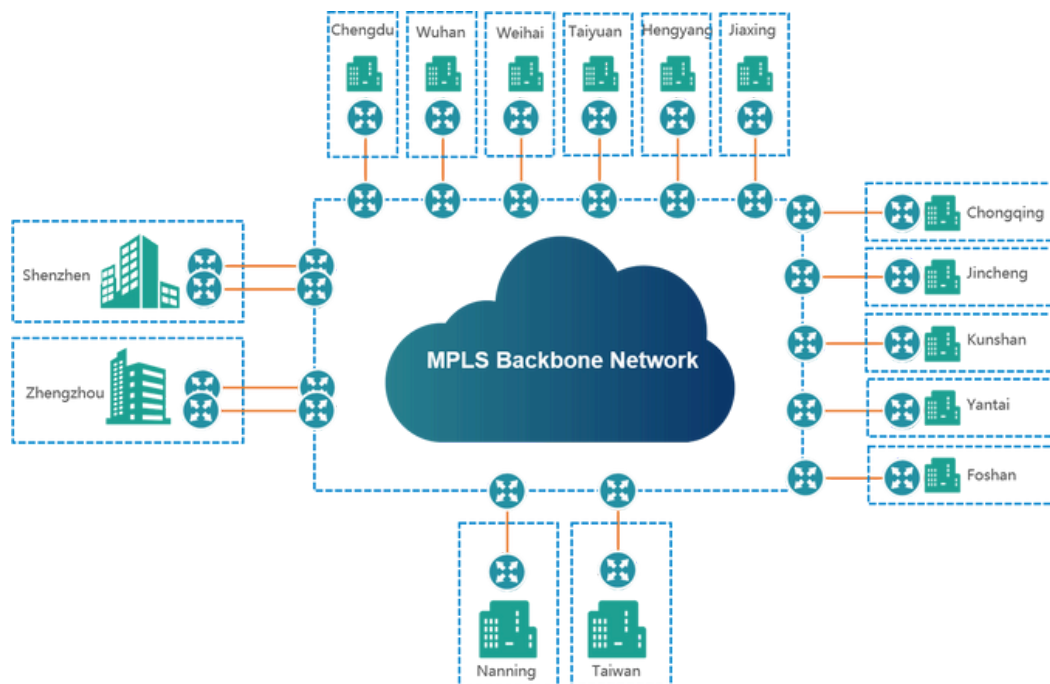
Our unified management system simplifies network operations with a centralized platform for monitoring and managing resources. This enhances visibility, streamlines troubleshooting, and reduces maintenance time, allowing IT teams to focus on strategic initiatives that drive business growth.

Intelligent Routing

Our dual-line, dual-routing system enhances redundancy and performance by connecting multiple local POPs. It ensures continuous service availability through automatic traffic rerouting and optimizes load balancing for peak usage and disruptions.

Enhanced Security Features

Real-time continuous monitoring enables quick issue identification and resolution. By tracking key performance metrics and providing actionable insights, our solutions enhance operational efficiency and ensure compliance with SLAs, maintaining consistent performance standards.



WHY CYPRESSTEL?

CypressTel is a leading global network service provider and pioneer in SD-WAN, delivering advanced and innovative ICT solutions for businesses of all sizes. With over 16 years of experience, we offer a wide range of services, including SD-WAN, SASE, Internet Access, Private Networks, Data Center Colocation, Cloud Connect, and WAN Optimization. Our extensive global presence features over 30 data centers, over 140 network PoPs, and coverage in over 300 cities, with a network capacity exceeding 10T. We are committed to continuous technological research and innovation in AI and edge computing, driving the adoption of new technologies.



✉ contact@cypressstel.com

🌐 <https://www.cypressstel.com>

Contact us



Follow us



CypressTel 🔍